

home & designer

going the EXTRA MILE

STORY RACHAEL HAVENS | PHOTOGRAPHY SANDY MACKAY



The great room's timber frame structure extends past the large patio doors and covers the deck area, providing a year-round view of the water. The large area rug is centred on the stone fireplace.



Mike and Kathy Hahn with Aika

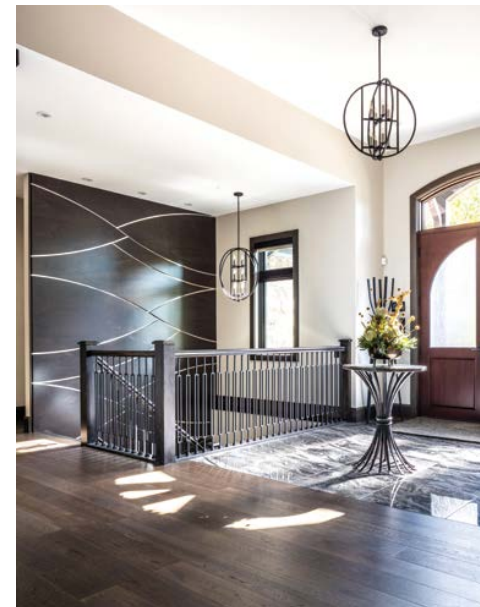
THE FIREPLACE IS THE HEART OF THE HAHN HOME. IT WAS BUILT FIRST, WITH THE TIMBER FRAME AND STRUCTURE RAISED AROUND THE CENTRAL STONE HEARTH.

Kathy and Mike Hahn had an expert team on their side to make their custom home a reality. Designer **Heather Smillie** of **House Rules Design Shop** played a central role in bringing the Hahns' vision to life. House Rules is a full-service design centre, working with both clients and contractors. Builder **Tim Clancy** of **Clancy Builders Ltd.** introduced Heather to the Hahns. Tim says that, when the Hahns asked him to recommend a designer, he told them: "Heather, that's it. You'll see what I'm talking about when you get there." *Continued on page 110*

A feature wall in the front foyer that extends down to the lower level uses wood panels mounted on a metal background. The design was a collaboration between Heather Smillie and Wood & Wallworks, which also built and installed the one-of-a-kind design. The preserved floral arrangement is from Carrie Lynn Floral + Event Styling.



The project started with the construction on the soaring stone fireplace by Vinny's Masonry. The timber frame structure by Rockwood Tree Farm & Timber Frame Homes was raised next, followed by the rest of the home.





ABOVE: Ground Effects Landscapes completed the beautiful landscaping around the home. Ziembra Exteriors installed the steel accent roof above a main-floor guest bedroom. Just Roof it completed the rest of the roof with supplies from Miller Home Hardware Building Centre. Stone for the project was sourced from Owen Sound Ledgerrock and Maxwell Stone. LEFT: Builder Tim Clancy and designer Heather Smillie. BELOW: Arbour Hill Custom Furniture and Cabinetry built the kitchen cabinets and supplied the stone countertops. The tile for the backsplash was sourced at House Rules Design Shop and installed by Beisel Contracting Inc.



IT'S ALL ABOUT THE DETAILS, BIG AND SMALL, FOR HEATHER, AND THAT'S SOMETHING KATHY AND MIKE APPRECIATED.

"Some of my favourite builds have been Clancy projects," Heather says. Owen Sound-based Clancy Builders, started by Tim's parents in the 1980s, is mainly focused on custom homes.

Mike and Kathy's style is a fusion of rustic and contemporary. The rustic base of their home on the lake near Port Elgin – the stone fireplace by **Vinny's Masonry** and timber frame by **Rockwood Tree Farm & Timber Frame Homes** – is complemented by contemporary finishes, including sleek light fixtures. Kathy had a vision of what she wanted in her home and Heather helped her design the look. Kathy and Heather shopped and found furniture, carpets and artwork in Toronto as well as selections from House Rules Design Shop and **Smitty's Fine Furniture**.

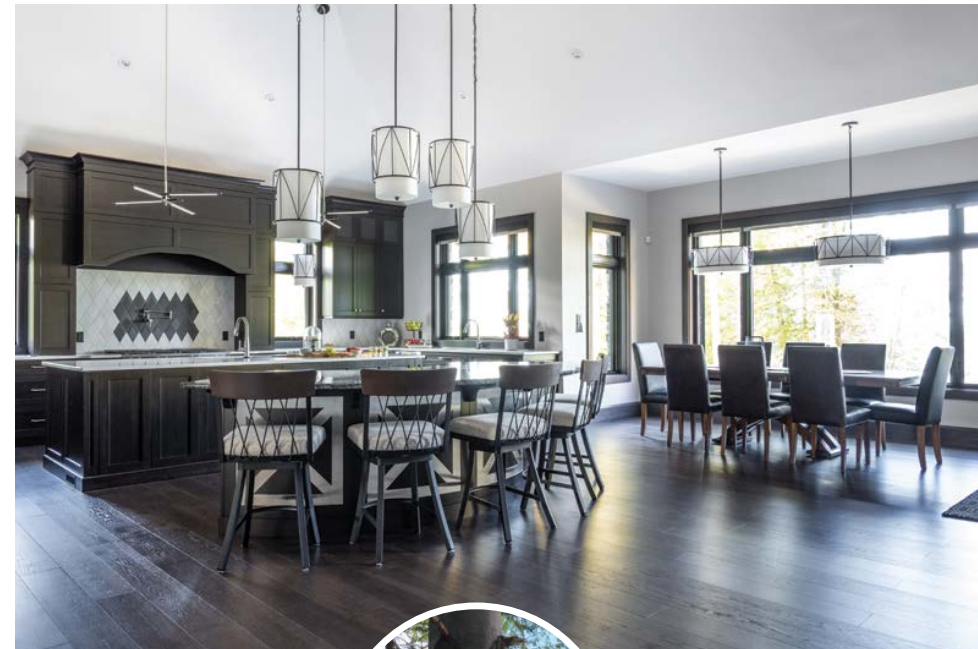
It was important to include stainless steel accents throughout the home, as Mike built their business in the metal industry. There are stainless details on the stairs, island and in the wine room, along with a steel accent roof by **Ziembra Exteriors** and shingles installed by **Just Roof It**. "Because this was a new chapter in their life, I wanted to make sure there were nods to where they came from," says Heather.

Continued on page 113

Drum pendants hang over the entertaining island. Plumbing for the project was completed by Acton's Plumbing and Heating. Engineered hickory flooring, sourced through House Rules Design Shop, was used throughout the main level.

home & designer

The large case opening into the great room makes the fireplace from The Fyre Place and Patio Shop part of the action in the kitchen. Wood & Wallworks completed the window and door trim throughout the home. LDS Electrical handled all electrical.



Mike had this sign made and hung at the end of the driveway. It summed up the Hahns' determination to build their home during the pandemic.



ABOVE: The view of Lake Huron is captured in the windows that fill the kitchen and dining area. Metal details on the entertainment island are repeated on the back of the stools and in the lighting. **BELOW LEFT:** The lower ceiling height and the alcove location in the dining area create an intimate atmosphere. The door leads to the covered outdoor seating area.

It's all about the details, big and small for Heather and that's something Kathy and Mike appreciated. It changed Mike's perspective throughout the build. He recalls visiting friends' homes in the past with Kathy saying "did you see that chandelier?" Mike didn't notice but says: "After spending so much time with Heather and Kathy going over paint, lighting and fixtures, I do notice now."

The entire team, the Hahns say, went the extra mile. Tim jokes that electrician **Lee Sammons** of **LDS Electrical** literally used more than three miles of electrical wire for the home, which was necessary to make the home automation by **Station Earth Total Home Technologies** function seamlessly as

Continued on page 115

home & designer



ABOVE: Tranquility in the primary bedroom is achieved with a neutral palette and luxe furnishings. Automated blinds can be operated from switches beside the bed. The coffered ceiling has wood detail, adding visual interest. **BOTTOM LEFT:** A tile inset on the floor of the primary bathroom appears like an area rug. Beisel Contracting Inc. installed tile throughout the home, also sourced from House Rules Design Shop. The mirror over the dressing table has an integrated television. **BOTTOM RIGHT:** A window runs the width of the mirror above the vanity by Arbour Hill Custom Furniture and Cabinetry in the primary bathroom. The mirror reflects the walk-in closet with built-ins by Wilson Solutions.



TOP: The door to the primary bathroom by Wood & Wallworks hangs on barn door hardware. Its pattern is repeated in the pendant light hanging over the bed, a side table and dresser. **BELOW:** The guest powder room is located off the front foyer. A hammered metal vessel sink sits on a live-edge slab from Mark Grubb. **RIGHT:** The bay windows in the main-floor guest bedroom flood the room with light. The wall colour throughout the main floor is Benjamin Moore Bliss.



KATHY HAD A VISION OF WHAT SHE WANTED IN HER HOME AND HEATHER HELPED HER DESIGN THE LOOK.



planned. The house is a smart home from top to bottom, from lighting to window coverings and security. Station Earth also completed the home theatre.

Beisel Contracting Inc. brought in an exceptional team to install all tile in the home. "I've never seen a tile job like that," says Tim. Ground Effects Landscapes says Tim. Ground Effects Landscapes did such a beautiful job on the landscaping

that a neighbour took her wedding photos in the garden.

The project was affectionately named *Pandemic Ponderosa 2020*. Mike even had a sign made for the end of the driveway. "I really appreciated Mike and Kathy's enthusiasm," says Tim. "Last year was challenging for everyone, but I quickly learned they were building this house no matter what."

Continued on page 118

home & designer




ABOVE: The walls of the wine cellar on the lower level are lined in metal. The arched door into the temperature-controlled room was custom made by Desboro Doors. **TOP LEFT:** The bar area on the lower level has a glass-tile backsplash and open shelves displaying a collection of Van Gogh Vodka. **LEFT:** Station Earth Total Home Technologies installed the acoustic panels on the ceiling in the theatre. LED lights appear like stars when the house lights are dimmed.



..and everything in between

Award Winning Custom Home Builder serving Grey and Bruce counties since 1988

Design and Build your dream home today, on your property or ours

519-376-0637 | clancybuilders.ca
 [clancybuilders](https://www.instagram.com/clancybuilders)



MILLER'S
 **Home**
 hardware
 building centre

Sauble Beach
 519-422-2424

Ryan.Greig@homehardware.ca





home & designer



LEFT: A welcoming bed in one of the lower-level bedrooms. Luxury vinyl on the floor was sourced at House Rules Design Shop. **ABOVE:** K-W Glass Systems Inc. supplied glass for all the showers in the home. This one has a curbless entry and a niche with contrasting tile and lights. **BELOW:** A vessel tub with a floor-mounted faucet sits on heated tiles. The teak tray has a book stand and enough room for soap and wine.



WE TAKE PRIDE IN EVERY JOB WE DO

- Residential
- Farm
- Commercial
- Master Electrician
- Renovations
- New Construction
- Rewiring
- Generator Panels
- Panel Changes

NO JOB TOO SMALL!

LEE SAMMONS
Master Electrician, ESA Lic # 7004419
Owen Sound | ldselectrical@hotmail.com
www.LDSELECTRICAL.net

Cook CONCRETE

- Concrete Foundations & Floors
- Excavation Services
- Sidewalks & Driveways
- ICF Homes
- Residential, commercial, & agricultural

Serving Grey Bruce & Wellington Counties.

519.375.5439

Actons
Plumbing & Heating
Since 1974

RENOVATIONS | NEW HOMES | RADIANT FLOOR HEAT | ELECTRIC DRAIN & SEWER CLEANING | PUMPS & PRESSURE SYSTEMS

114 Drive-In Cres., Owen Sound | **519-376-6249**

Now happily settled into their home, Mike and Kathy are enjoying all that Grey-Bruce has to offer, including lots of fishing. They belong to the Lake Huron Fishing Club, an organization that is working to repopulate the lake by adding 250,000 fish every year.

A hidden light in the top attic window of the house, facing Lake Huron, guides Mike home after a long day on the lake. "I can use my phone to turn on the light and it will guide me home." The light can be seen from three kilometres out. "You know the light on a football field?" laughs Tim. "It's a little bit brighter than that."

It was actually a fishing trip that brought Mike to the area in the first place; his uncle would bring him up to catch local salmon as a young boy. He fell in love with the area, and Kathy has too. "Now it feels like home," they say.

This house has been a swan song for Kathy and Mike, who are both now retired, and they are ready to settle in and enjoy. Kathy gets emotional when she looks back on the project. "We've worked all our lives for our dream house." **OH**